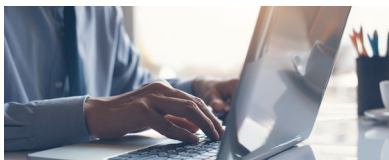


# REOPENING WORKPLACES DURING THE COVID-19 PANDEMIC



The purpose of this tool is to assist employers in making decisions during the COVID-19 pandemic, especially to protect vulnerable workers. It is important to check with state and local health officials and other partners to determine the most appropriate actions.

## Should you consider opening?

- ✓ Is the workplace in a community no longer requiring significant mitigation\*?
- ✓ Will reopening be in compliance with state and local orders?
- ✓ Will you be ready to protect employees at higher risk for severe illness?

ANY  
NO



ALL  
YES



## Are recommended safety actions in place?

- ✓ Promote healthy hygiene practices such as hand washing, wearing a cloth face covering
- ✓ Intensify cleaning, disinfection, and ventilation
- ✓ Ensure social distancing such as installing physical barriers, changing layout of workspaces, encouraging telework, closing communal spaces, staggering shifts and breaks, no large events
- ✓ Limit travel and modify commuting practices
- ✓ Train all staff on safety actions

ANY  
NO



ALL  
YES



## Is ongoing monitoring in place?

- ✓ Check for signs and symptoms of employees
- ✓ Encourage employees who are sick to stay home
- ✓ Plan for when an employee gets sick
- ✓ Regularly communicate with local authorities and employees
- ✓ Monitor staff absences and have flexible leave policies and practices
- ✓ Be ready to close if there are increased cases

ANY  
NO



ALL  
YES



OPEN AND  
MONITOR

\*Or in an area with significant mitigation and providing essential, critical infrastructure